

# Set 4: Multiple-Choice Questions on Applications of Differential Calculus

- The slope of the curve  $y^3 - xy^2 = 4$  at the point where  $y = 2$  is  
 (A)  $-2$  (B)  $\frac{1}{4}$  (C)  $-\frac{1}{2}$  (D)  $\frac{1}{2}$  (E)  $2$
- The slope of the curve  $y^2 - xy - 3x = 1$  at the point  $(0, -1)$  is  
 (A)  $-1$  (B)  $-2$  (C)  $+1$  (D)  $2$  (E)  $-3$
- The equation of the tangent to the curve  $y = x \sin x$  at the point  $\left(\frac{\pi}{2}, \frac{\pi}{2}\right)$  is  
 (A)  $y = x - \pi$  (B)  $y = \frac{\pi}{2}$  (C)  $y = \pi - x$   
 (D)  $y = x + \frac{\pi}{2}$  (E)  $y = x$
- The tangent to the curve of  $y = xe^{-x}$  is horizontal when  $x$  is equal to  
 (A)  $0$  (B)  $1$  (C)  $-1$  (D)  $\frac{1}{e}$  (E) none of these
- The point on the curve  $y = \sqrt{2x+1}$  at which the normal is parallel to the line  $y = -3x + 6$  is  
 (A)  $(4, 3)$  (B)  $(0, 1)$  (C)  $(1, \sqrt{3})$   
 (D)  $(4, -3)$  (E)  $(2, \sqrt{5})$
- The minimum value of the slope of the curve  $y = x^5 + x^3 - 2x$  is  
 (A)  $0$  (B)  $2$  (C)  $6$  (D)  $-2$  (E) none of these
- The equation of the tangent to the curve  $x^2 = 4y$  at the point on the curve where  $x = -2$  is  
 (A)  $x + y - 3 = 0$  (B)  $y - 1 = 2x(x + 2)$  (C)  $x - y + 3 = 0$   
 (D)  $x + y - 1 = 0$  (E)  $x + y + 1 = 0$
- The equation of the tangent to the hyperbola  $x^2 - y^2 = 12$  at the point  $(4, 2)$  on the curve is  
 (A)  $x - 2y + 6 = 0$  (B)  $y = 2x$  (C)  $y = 2x - 6$   
 (D)  $y = \frac{x}{2}$  (E)  $x + 2y = 6$

9. The tangent to the curve  $y^2 - xy + 9 = 0$  is vertical when

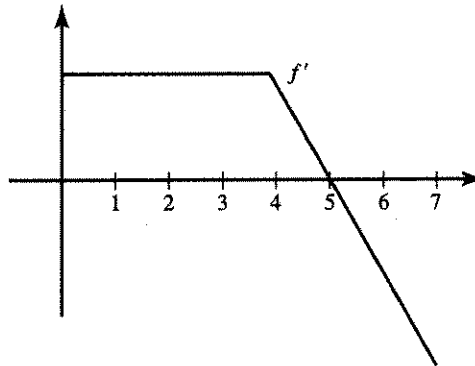
- (A)  $y = 0$     (B)  $y = \pm\sqrt{3}$     (C)  $y = \frac{1}{2}$   
 (D)  $y = \pm 3$     (E) none of these

10. The table shows the velocity at time  $t$  of an object moving along a line. Estimate the acceleration (in ft/sec<sup>2</sup>) at  $t = 6$  sec.

$t$ (sec)	0	4	8	10
vel.	18	16	10	0

- (A) -6    (B) -1.8    (C) -1.5    (D) 1.5    (E) 6

Use the graph shown, sketched on  $[0, 7]$ , for Questions 11–13.



11. From the graph it follows that

- (A)  $f$  is discontinuous at  $x = 4$   
 (B)  $f$  is decreasing for  $4 < x < 7$   
 (C)  $f$  is constant for  $0 < x < 4$   
 (D)  $f$  has a local maximum at  $x = 0$   
 (E)  $f$  has a local minimum at  $x = 7$

12. Which statement best describes  $f$  at  $x = 5$ ?

- (A)  $f$  has a root.    (B)  $f$  is a maximum.    (C)  $f$  is a minimum.  
 (D)  $f$  has a point of inflection.    (E) none of these

13. The function is concave downward for which interval?

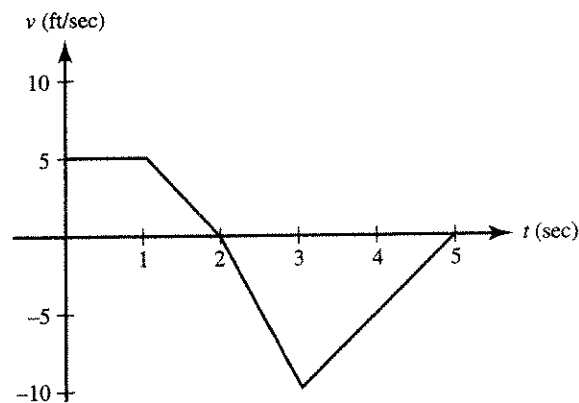
- (A)  $(0, 4)$     (B)  $(4, 5)$     (C)  $(5, 7)$   
 (D)  $(4, 7)$     (E) none of these

14. The best approximation, in cubic inches, to the increase in volume of a sphere when the radius is increased from 3 to 3.1 in. is

- (A) 11.3    (B) 11.7    (C) 12.1    (D) 33.9    (E) 39.7

15. When  $x = 3$ , the equation  $2x^2 - y^3 = 10$  has the solution  $y = 2$ . When  $x = 3.04$ ,  $y \approx$   
 (A) 1.6 (B) 1.96 (C) 2.04 (D) 2.14 (E) 2.4
16. If the side  $e$  of a square is increased by 1%, then the area is increased approximately  
 (A)  $0.02e$  (B)  $0.02e^2$  (C)  $0.01e^2$  (D) 1% (E)  $0.01e$
17. The edge of a cube has length 10 in., with a possible error of 1%. The possible error in cubic inches, in the volume of the cube is  
 (A) 3 (B) 1 (C) 10 (D) 30 (E) none of these

Use the graph shown for Questions 18–24. It shows the velocity of an object moving along a straight line during the time interval  $0 \leq t \leq 5$ .



18. The object attains its maximum speed when  $t =$   
 (A) 0 (B) 1 (C) 2 (D) 3 (E) 5
19. The speed of the object is increasing during the time interval  
 (A) (0,1) (B) (1,2) (C) (0,2) (D) (2,3) (E) (3,5)
20. The acceleration of the object is positive during the time interval  
 (A) (0,1) (B) (1,2) (C) (0,2) (D) (2,3) (E) (3,5)
21. How many times on  $0 < t < 5$  is the object's acceleration undefined?  
 (A) none (B) 1 (C) 2 (D) 3 (E) more than 3
22. During  $2 < t < 3$  the object's acceleration (in  $\text{ft}/\text{sec}^2$ ) is  
 (A) -10 (B) -5 (C) 0 (D) 5 (E) 10
23. The object is furthest to the right when  $t =$   
 (A) 0 (B) 1 (C) 2 (D) 3 (E) 5
24. The object's average acceleration (in  $\text{ft}/\text{sec}^2$ ) for the interval  $0 \leq t \leq 3$  is  
 (A) -15 (B) -5 (C) -3 (D) -1 (E) none of these

- 3.04,  $y \approx$   
2.4  
approximately  
E)  $0.01e$   
possible error  
of these  
object moving
25. The function  $f(x) = x^4 - 4x^2$  has  
(A) one relative minimum and two relative maxima  
(B) one relative minimum and one relative maximum  
(C) two relative maxima and no relative minimum  
(D) two relative minima and no relative maximum  
(E) two relative minima and one relative maximum
26. The number of inflection points of the curve in Question 25 is  
(A) 0 (B) 1 (C) 2 (D) 3 (E) 4
27. The maximum value of the function  $y = -4\sqrt{2-x}$  is  
(A) 0 (B) -4 (C) 2 (D) -2 (E) none of these
28. The total number of local maximum and minimum points of the function whose derivative, for all  $x$ , is given by  $f'(x) = x(x-3)^2(x+1)^4$  is  
(A) 0 (B) 1 (C) 2 (D) 3 (E) none of these
29. If  $x \neq 0$ , then the slope of  $x \sin \frac{1}{x}$  equals zero whenever  
(A)  $\tan \frac{1}{x} = x$  (B)  $\tan \frac{1}{x} = -x$  (C)  $\cos \frac{1}{x} = 0$   
(D)  $\sin \frac{1}{x} = 0$  (E)  $\tan \frac{1}{x} = \frac{1}{x}$
30. On the closed interval  $[0, 2\pi]$ , the maximum value of the function  $f(x) = 4 \sin x - 3 \cos x$  is  
(A) 3 (B) 4 (C)  $\frac{24}{5}$  (D) 5 (E) none of these
31. If  $m_1$  is the slope of the curve  $xy = 2$  and  $m_2$  is the slope of the curve  $x^2 - y^2 = 3$ , then at a point of intersection of the two curves  
(A)  $m_1 = -m_2$  (B)  $m_1 m_2 = -1$  (C)  $m_1 = m_2$   
(D)  $m_1 m_2 = 1$  (E)  $m_1 m_2 = -2$
32. The line  $y = 3x + k$  is tangent to the curve  $y = x^3$  when  $k$  is equal to  
(A) 1 or -1 (B) 0 (C) 3 or -3 (D) 4 or -4 (E) 2 or -2
33. The two tangents that can be drawn from the point (3,5) to the parabola  $y = x^2$  have slopes  
(A) 1 and 5 (B) 0 and 4 (C) 2 and 10  
(D) 2 and  $-\frac{1}{2}$  (E) 2 and 4
- han 3  
s  
of these

34. The table shows the velocity at various times of an object moving along a line. An estimate of its acceleration (in ft/sec<sup>2</sup>) at  $t = 1$  is

$t$ (sec)	1.0	1.5	2.0	2.5
$v$ (ft/sec)	12.2	13.0	13.4	13.7

- (A) 0.8    (B) 1.0    (C) 1.2    (D) 1.4    (E) 1.6

In Questions 35–38, the position of a particle moving along a straight line is given by  $s = t^3 - 6t^2 + 12t - 8$ .

35. The distance  $s$  is increasing for

- (A)  $t < 2$     (B) all  $t$  except  $t = 2$     (C)  $1 < t < 3$   
 (D)  $t < 1$  or  $t > 3$     (E)  $t > 2$

36. The minimum value of the speed is

- (A) 1    (B) 2    (C) 3    (D) 0    (E) none of these

37. The acceleration is positive

- (A) when  $t > 2$     (B) for all  $t, t \neq 2$     (C) when  $t < 2$   
 (D) for  $1 < t < 3$     (E) for  $1 < t < 2$

38. The speed of the particle is decreasing for

- (A)  $t > 2$     (B)  $t < 3$     (C) all  $t$   
 (D)  $t < 1$  or  $t > 2$     (E) none of these

In Questions 39–41, a particle moves along a horizontal line and its position at time  $t$  is  $s = t^4 - 6t^3 + 12t^2 + 3$ .

39. The particle is at rest when  $t$  is equal to

- (A) 1 or 2    (B) 0    (C)  $\frac{9}{4}$     (D) 0, 2, or 3    (E) none of these

40. The velocity,  $v$ , is increasing when

- (A)  $t > 1$     (B)  $1 < t < 2$     (C)  $t < 2$   
 (D)  $t < 1$  or  $t > 2$     (E)  $t > 0$

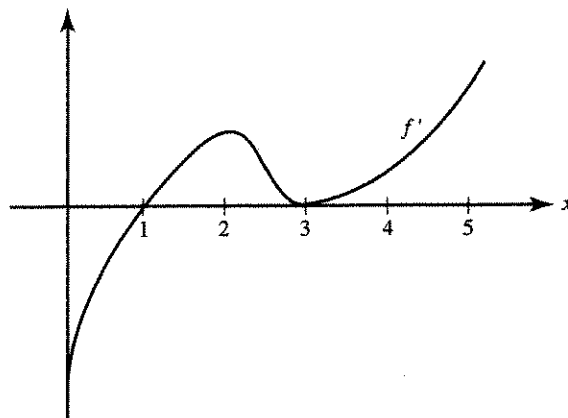
41. The speed of the particle is increasing for

- (A)  $0 < t < 1$  or  $t > 2$     (B)  $1 < t < 2$     (C)  $t < 2$   
 (D)  $t < 0$  or  $t > 2$     (E)  $t < 0$

For Questions 42 and 43,  $f'(x) = x \sin x - \cos x$  for  $0 < x < 4$ .

42.  $f$  has a local maximum when  $x$  is approximately  
(A) 0.9    (B) 1.2    (C) 2.3    (D) 3.4    (E) 3.7
43.  $f$  has a point of inflection when  $x$  is approximately  
(A) 0.9    (B) 1.2    (C) 2.3    (D) 3.4    (E) 3.7
44. The displacement from the origin of a particle moving on a line is given by  $s = t^4 - 4t^3$ . The maximum displacement during the time interval  $-2 \leq t \leq 4$  is  
(A) 27    (B) 3    (C)  $12\sqrt{3} + 3$   
(D) 48    (E) none of these
45. If a particle moves along a line according to the law  $s = t^5 + 5t^4$ , then the number of times it reverses direction is  
(A) 0    (B) 1    (C) 2    (D) 3    (E) 4

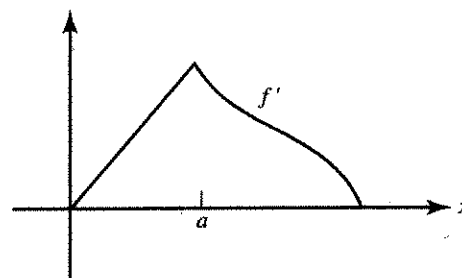
Use the graph of  $f'$  on  $[0,5]$ , shown below, for Questions 56 and 57.



56.  $f$  has a local minimum at  $x =$   
 (A) 0 (B) 1 (C) 2 (D) 3 (E) 5
57.  $f$  has a point of inflection at  $x =$   
 (A) 1 only (B) 2 only (C) 3 only  
 (D) 2 and 3 only (E) none of these

58. It follows from the graph of  $f'$ , shown at the right, that

- (A)  $f$  is not continuous at  $x = a$   
 (B)  $f$  is continuous but not differentiable at  $x = a$   
 (C)  $f$  has a relative maximum at  $x = a$   
 (D)  $f$  has a point of inflection at  $x = a$   
 (E) none of these



59. A balloon is being filled with helium at the rate of  $4 \text{ ft}^3/\text{min}$ . The rate, in square feet per minute, at which the surface area is increasing when the volume is  $\frac{32\pi}{3} \text{ ft}^3$  is  
 (A)  $4\pi$  (B) 2 (C) 4 (D) 1 (E)  $2\pi$
60. A circular conical reservoir, vertex down, has depth 20 ft and radius of the top 10 ft. Water is leaking out so that the surface is falling at the rate of  $\frac{1}{2} \text{ ft/hr}$ . The rate, in cubic feet per hour, at which the water is leaving the reservoir when the water is 8 ft deep is  
 (A)  $4\pi$  (B)  $8\pi$  (C)  $16\pi$  (D)  $\frac{1}{4\pi}$  (E)  $\frac{1}{8\pi}$
61. A vertical circular cylinder has radius  $r$  ft and height  $h$  ft. If the height and radius both increase at the constant rate of  $2 \text{ ft/sec}$ , then the rate, in square feet per second, at which the lateral surface area increases is  
 (A)  $4\pi r$  (B)  $2\pi(r+h)$  (C)  $4\pi(r+h)$  (D)  $4\pi rh$  (E)  $4\pi h$

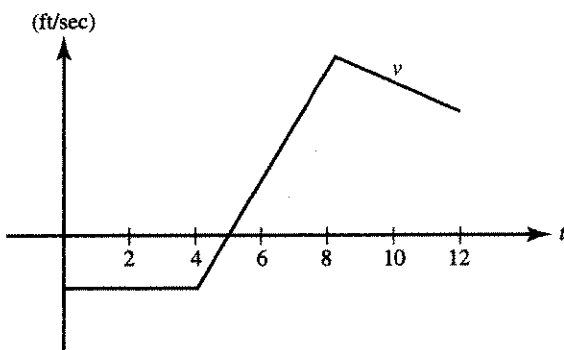
62. A local minimum value of the function  $y = \frac{e^x}{x}$  is  
 (A)  $\frac{1}{e}$  (B) 1 (C) -1 (D)  $e$  (E) 0
63. The area of the largest rectangle that can be drawn with one side along the  $x$ -axis and two vertices on the curve of  $y = e^{-x^2}$  is  
 (A)  $\sqrt{\frac{2}{e}}$  (B)  $\sqrt{2e}$  (C)  $\frac{2}{e}$  (D)  $\frac{1}{\sqrt{2e}}$  (E)  $\frac{2}{e^2}$
64. A tangent drawn to the parabola  $y = 4 - x^2$  at the point  $(1, 3)$  forms a right triangle with the coordinate axes. The area of the triangle is  
 (A)  $\frac{5}{4}$  (B)  $\frac{5}{2}$  (C)  $\frac{25}{2}$  (D) 1 (E)  $\frac{25}{4}$
65. If the cylinder of largest possible volume is inscribed in a given sphere, the ratio of the volume of the sphere to that of the cylinder is  
 (A)  $\sqrt{3} : 1$  (B)  $\sqrt{3} : 3$  (C)  $3 : 1$   
 (D)  $2\sqrt{3} : 3$  (E)  $3\sqrt{3} : 4$
66. A line is drawn through the point  $(1, 2)$  forming a right triangle with the positive  $x$ - and  $y$ -axes. The slope of the line forming the triangle of least area is  
 (A) -1 (B) -2 (C) -4 (D)  $-\frac{1}{2}$  (E) -3
67. The point(s) on the curve  $x^2 - y^2 = 4$  closest to the point  $(6, 0)$  is (are)  
 (A)  $(2, 0)$  (B)  $(\sqrt{5}, \pm 1)$  (C)  $(3, \pm\sqrt{5})$   
 (D)  $(\sqrt{13}, \pm\sqrt{3})$  (E) none of these
68. The sum of the squares of two positive numbers is 200; their minimum product is  
 (A) 100 (B)  $25\sqrt{7}$  (C) 28  
 (D)  $24\sqrt{14}$  (E) none of these
69. The first-quadrant point on the curve  $y^2x = 18$  which is closest to the point  $(2, 0)$  is  
 (A)  $(2, 3)$  (B)  $(6, \sqrt{3})$  (C)  $(3, \sqrt{6})$   
 (D)  $(1, 3\sqrt{2})$  (E) none of these
70. Two cars are traveling along perpendicular roads, car  $A$  at 40 mph, car  $B$  at 60 mph. At noon, when car  $A$  reaches the intersection, car  $B$  is 90 mi away, and moving toward it. At 1 P.M. the rate, in miles per hour, at which the distance between the cars is changing is  
 (A) -40 (B) 68 (C) 4 (D) -4 (E) 40



71. For Question 70, if  $t$  is the number of hours of travel after noon, then the cars are closest together when  $t$  is

- (A) 0    (B)  $\frac{27}{26}$     (C)  $\frac{9}{5}$     (D)  $\frac{3}{2}$     (E)  $\frac{14}{13}$

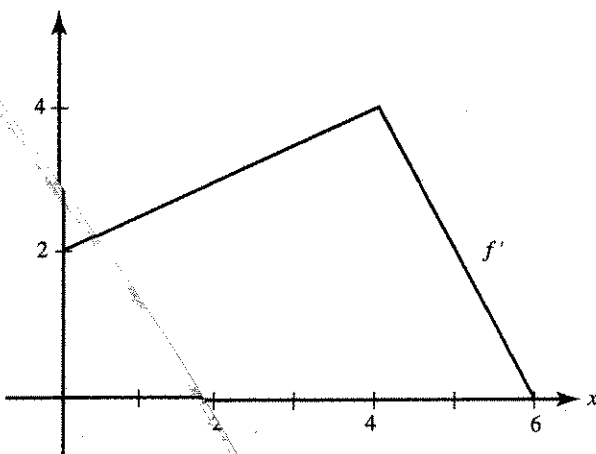
The graph for Questions 72 and 73 shows the velocity of an object moving along a straight line during the time interval  $0 \leq t \leq 12$ .



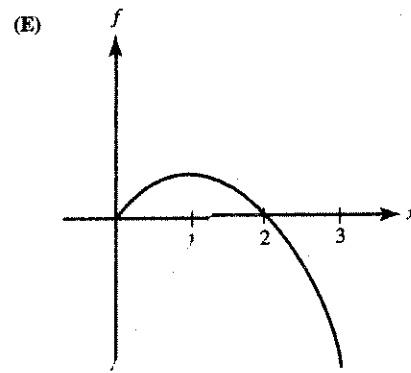
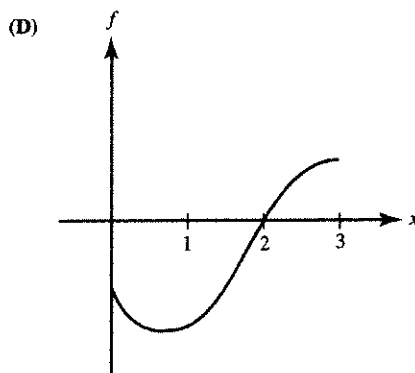
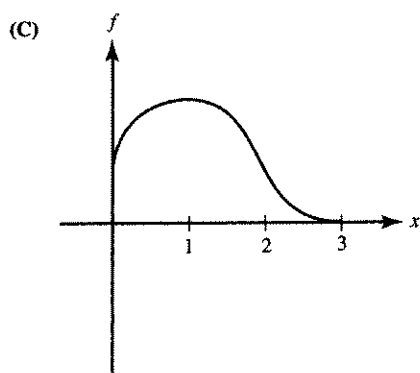
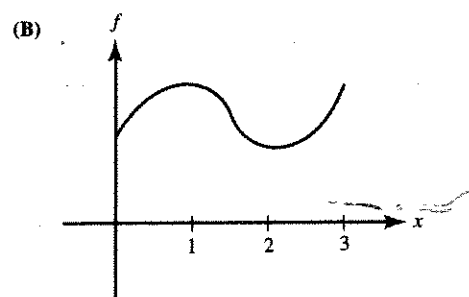
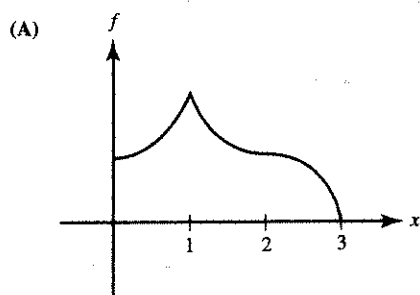
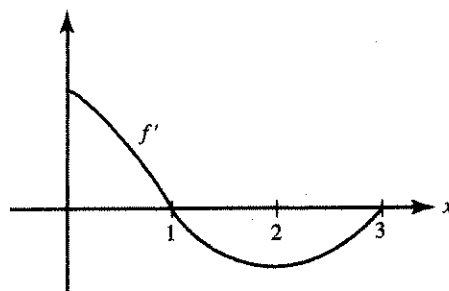
72. For what  $t$  does this object attain its maximum acceleration?  
 (A)  $0 < t < 4$     (B)  $4 < t < 8$     (C)  $t = 5$     (D)  $t = 8$     (E)  $t = 12$

73. The object reverses direction at  $t =$   
 (A) 4 only    (B) 5 only    (C) 8 only  
 (D) 5 and 8    (E) none of these

74. The graph of  $f'$  is shown below. If we know that  $f(2) = 10$ , then the local linearization of  $f$  at  $x = 2$  is  $f(x) \approx$   
 (A)  $\frac{x}{2} + 2$     (B)  $\frac{x}{2} + 9$     (C)  $3x - 3$   
 (D)  $3x + 4$     (E)  $10x - 17$



75. Given  $f'$  as graphed, which could be the graph of  $f$ ?

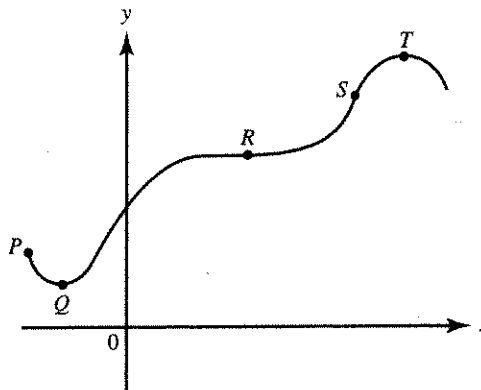


76. If  $h$  is a small negative number, then the best approximation for  $\sqrt[3]{27+h}$  is

- (A)  $3 + \frac{h}{27}$       (B)  $3 - \frac{h}{27}$       (C)  $\frac{h}{27}$   
 (D)  $-\frac{h}{27}$       (E)  $3 - \frac{h}{9}$

77. If  $f(x) = xe^{-x}$ , then at  $x = 0$
- (A)  $f$  is increasing (B)  $f$  is decreasing (C)  $f$  has a relative maximum  
 (D)  $f$  has a relative minimum (E)  $f'$  does not exist
78. A function  $f$  has a derivative for each  $x$  such that  $|x| < 2$  and has a local minimum at  $(2, -5)$ . Which statement below must be true?
- (A)  $f'(2) = 0$ .  
 (B)  $f'$  exists at  $x = 2$ .  
 (C) The graph is concave up at  $x = 2$ .  
 (D)  $f'(x) < 0$  if  $x < 2$ ,  $f'(x) > 0$  if  $x > 2$ .  
 (E) None of the preceding is necessarily true.
79. The height of a rectangular box is 10 in. Its length increases at the rate of 2 in./sec; its width decreases at the rate of 4 in./sec. When the length is 8 in. and the width is 6 in., the rate, in cubic inches per second, at which the volume of the box is changing is
- (A) 200 (B) 80 (C) -80 (D) -200 (E) -20
80. The tangent to the curve  $x^3 + x^2y + 4y = 1$  at the point  $(3, -2)$  has slope
- (A) -3 (B)  $-\frac{23}{9}$  (C)  $-\frac{27}{13}$  (D)  $-\frac{11}{9}$  (E)  $-\frac{15}{13}$
81. If  $f(x) = ax^4 + bx^2$  and  $ab > 0$ , then
- (A) the curve has no horizontal tangents  
 (B) the curve is concave up for all  $x$   
 (C) the curve is concave down for all  $x$   
 (D) the curve has no inflection point  
 (E) none of the preceding is necessarily true

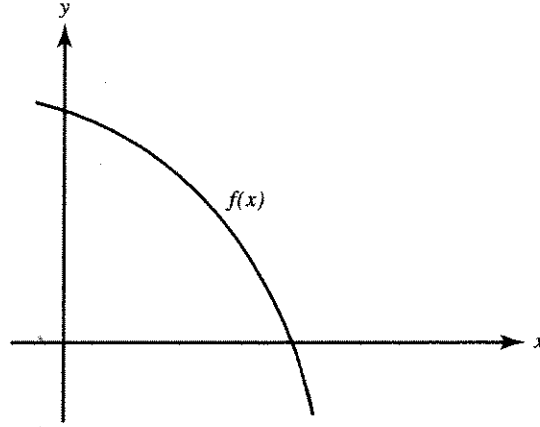
Use the following graph for Questions 82–84.



82. At which labeled point do both  $\frac{dy}{dx}$  and  $\frac{d^2y}{dx^2}$  equal zero?
- (A) P (B) Q (C) R (D) S (E) T

83. At which labeled point is  $\frac{dy}{dx}$  positive and  $\frac{d^2y}{dx^2}$  equal to zero?  
 (A)  $P$  (B)  $Q$  (C)  $R$  (D)  $S$  (E)  $T$
84. At which labeled point is  $\frac{dy}{dx}$  equal to zero and  $\frac{d^2y}{dx^2}$  negative?  
 (A)  $P$  (B)  $Q$  (C)  $R$  (D)  $S$  (E)  $T$
85. Which statement below is true about the curve  $y = \frac{2x^2 + 4}{2 + 7x - 4x^2}$ ?  
 (A) The line  $x = -\frac{1}{4}$  is a vertical asymptote.  
 (B) The line  $x = 1$  is a vertical asymptote.  
 (C) The line  $y = -\frac{1}{4}$  is a horizontal asymptote.  
 (D) The graph has no vertical or horizontal asymptotes.  
 (E) The line  $x = 2$  is a horizontal asymptote.
- \*86. The equation of the tangent to the curve with parametric equations  $x = 2t + 1$ ,  $y = 3 - t^2$  at the point where  $t = 1$  is  
 (A)  $2x + 3y = 12$  (B)  $3x + 2y = 13$  (C)  $6x + y = 20$   
 (D)  $3x - 2y = 5$  (E) none of these
87. Approximately how much less than 4 is  $\sqrt[3]{63}$ ?  
 (A)  $\frac{1}{48}$  (B)  $\frac{1}{16}$  (C)  $\frac{1}{3}$  (D)  $\frac{2}{3}$  (E) 1
88. If  $f(6) = 30$  and  $f'(x) = \frac{x^2}{x+3}$ , then an estimate of  $f(6.02)$ , using the local linearization is  
 (A) 29.92 (B) 30.02 (C) 30.08  
 (D) 34.00 (E) none of these
89. The best linear approximation for  $f(x) = \tan x$  near  $x = \frac{\pi}{4}$  is  
 (A)  $1 + \frac{1}{2}(x - \frac{\pi}{4})$  (B)  $1 + (x - \frac{\pi}{4})$  (C)  $1 + \sqrt{2}(x - \frac{\pi}{4})$   
 (D)  $1 + 2(x - \frac{\pi}{4})$  (E)  $2 + 2(x - \frac{\pi}{4})$
90. The tangent line approximation for  $f(x) = \sqrt{x^2 + 16}$  near  $x = -3$  is  
 (A)  $5 - \frac{3}{5}(x - 3)$  (B)  $5 + \frac{3}{5}(x - 3)$  (C)  $5 - \frac{3}{5}(x + 3)$   
 (D)  $3 - \frac{5}{3}(x - 3)$  (E)  $3 + \frac{3}{5}(x + 3)$

91. When  $h$  is near zero,  $e^{kh}$ , using local linearization, is approximately  
 (A)  $k$  (B)  $kh$  (C)  $1$  (D)  $1+k$  (E)  $1+kh$
92. If  $f(x) = cx^2 + dx + e$  for the function shown in the graph, then



- (A)  $c, d,$  and  $e$  are all positive  
 (B)  $c > 0, d < 0, e < 0$   
 (C)  $c > 0, d < 0, e > 0$   
 (D)  $c < 0, d > 0, e > 0$   
 (E)  $c < 0, d < 0, e > 0$

+1,  $y = 3 -$

linearization,

$\frac{\pi}{4}$